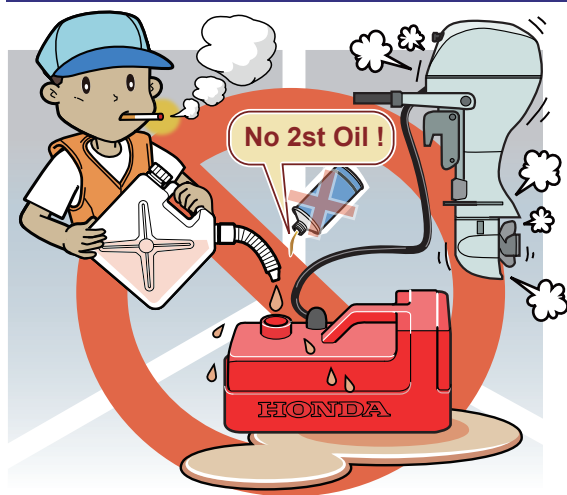


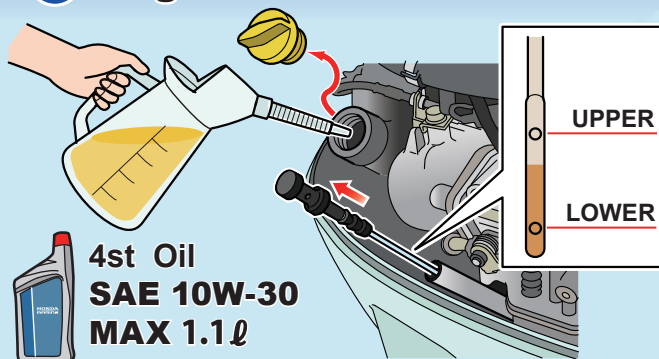


※ Read and understand the Owner's Manual before operating the Outboard motor.

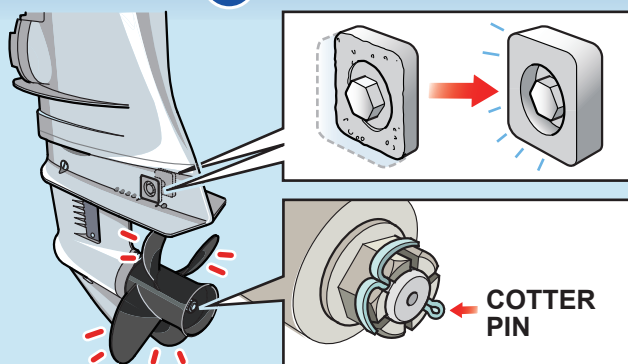


► Pre Operation Check

1 Engine Oil



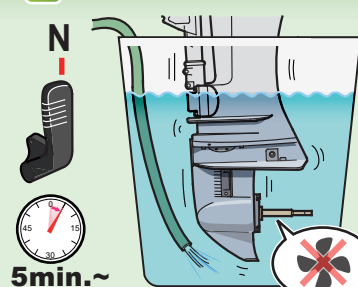
2 Anode Metal



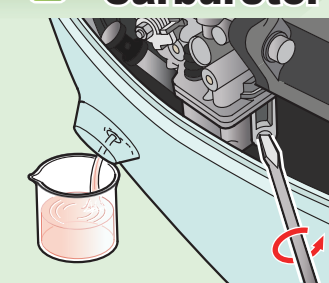
3 Propeller & Cotter Pin

► After Use

1 Flushing

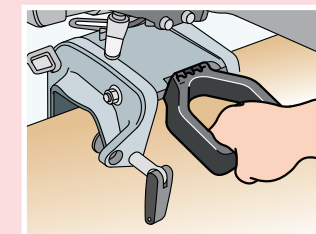
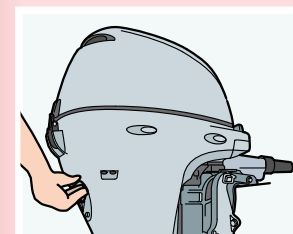


2 Drain Fuel: Carburetor

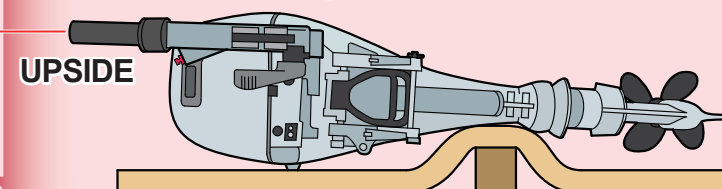


► Transporting

Carrying Handle



Storage Position



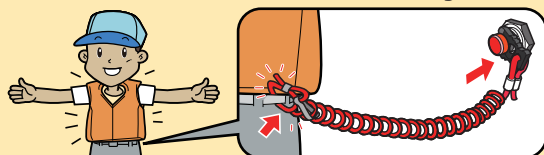
INCORRECT



⚠ Safety Precaution

Wear Life jacket !

Emergency Stop Switch Lanyard.



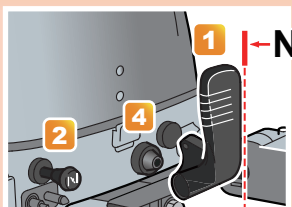
Confirmation of left and right.

Weather forecast is confirmed.

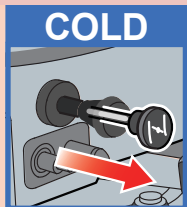


► How to start

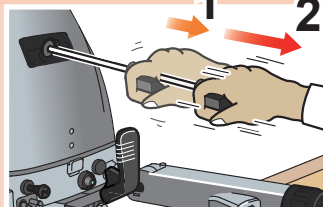
1 Shift Lever



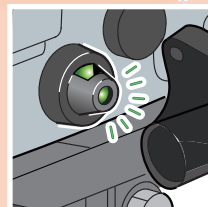
2 Choke ON/OFF



3 Start



4 Oil Pressure Indicator Light



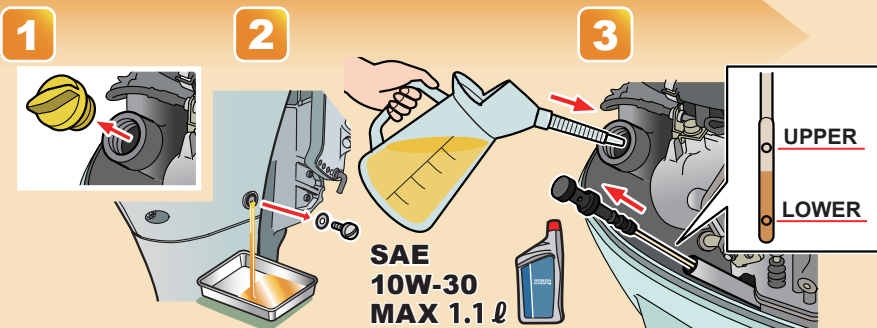


Maintenance Schedule

Regular Service Period	Before each use	First month or 20 Hours	Every 6 months or 100 Hours	Every year or 200 Hours
Engine oil	Check	Change	Change	Change
Gear case oil		Change	Change	Change
Starter rope	Check		Check	Check
Spark plug			Check-adjust	Check-adjust
Propeller and Cotterpin	Check			
Emergency stop switch	Check			
Anode	Check			
Grease		Apply	Apply	Apply
Fuel filter			Check	Change
Fuel line	Check			
Fuel line		Every 2 years Replace if necessary		
Valve clearance				Check-adjust
Idle speed Carburetor linkage				Check-adjust
Fuel tank & tank filter		Take the outboard motor to a Honda servicing dealer.		
Crankcase breather tube Timing belt Thermostat Water pump				Check
Bolts and nuts				Check
Engine oil filter				Change

* Read and understand the Owner's Manual before operating the Outboard motor.

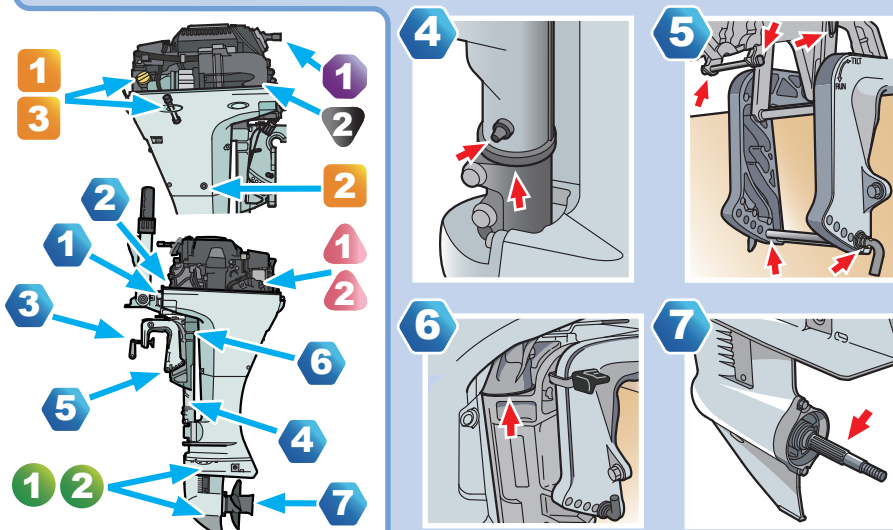
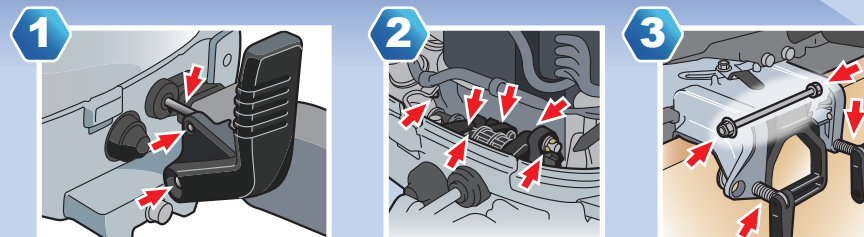
Engine Oil



Gear Oil



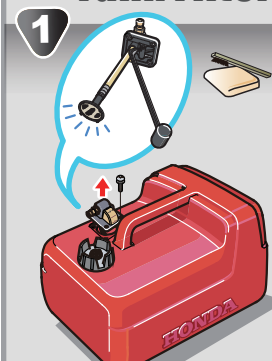
Grease



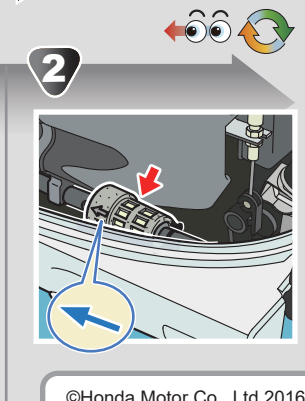
Spark Plug



Fuel Tank Tank Filter



Fuel Filter



Starter Rope

